

ARRONE®
The **complete** range.

AR4750 Smart Handle



Product Description

The AR4750 is a smart handle, designed to work with lift-lever morticed locks, by providing an access control function to the operation of the handle's lever.

On closing the door, the lever is inactive, and is unable to retract the latch until access is granted by one of the 4 methods of access control. The lever then becomes active and is able to retract the latch in order to open the door. After a specified time period, which can be set by the user, the lever will then become inactive again. The lift function of the lever to engage the multipoint lock always remains active.

The handle is designed to accept a Euro profile cylinder, which will mechanically lock the morticed lock as a holiday function, requiring a key to unlock along with the lever's access control.



Product Features



- Suitable for 35-70mm doors as standard, including timber, composite, PVC and Aluminium/Steel profile doors
- Suitable for both internal and external use
- Able to offer 4 methods of access controlled entry
- Passcode can be made temporary to allow for restricted access at specified times
- Mobile App can be used to set codes, register fingerprints and to remotely unlock via Bluetooth
- Lift function to engage multipoint locking is always active

Product Specification

Models	AR4750-92	Doors Applicable	Aluminum door Wooden door
Materials	Handle: SS304 Panel: SS304	Working Voltage	6V/4x AA Batteries
Handle Weight	3 KG	Door Thickness	35-70mm
Means of Unlocking	Bluetooth (App Control) Fingerprint Passcode RFID Card	Data Capacity	Fingerprint: 200 Password: 150 Card: 200
Color Options	Silver Black	Working Temperature	-10°C to +55°C
Low Voltage Alarm	Less than 4.8V	Working Humidity	0-95%

Main Functions

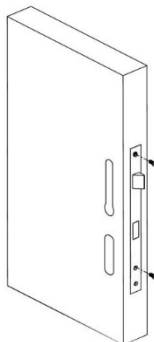
- Passcode – User can set a numerical code which is input on external handle to gain entry
- Fingerprint – User can program a fingerprint to be read by the handle to gain entry



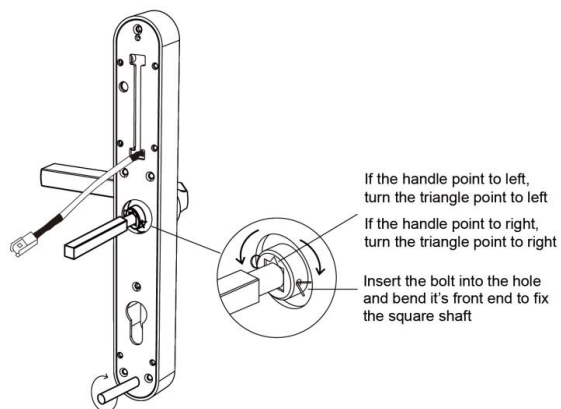
- RFID Card – An RFID card can be presented and read by the handle to gain entry
- App – the TTLock App can be used to open the lock via Bluetooth

Installation

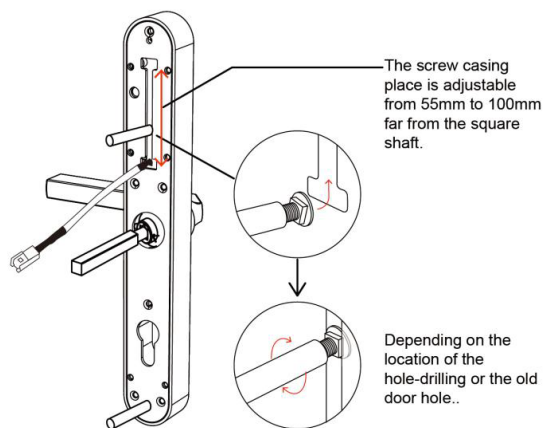
Step 1 Install Lock Case



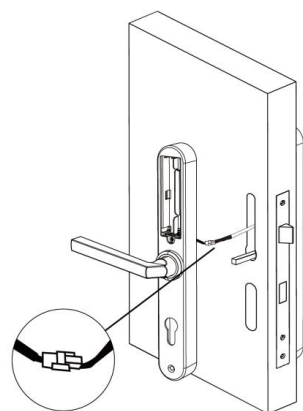
Step 2 Install Square Shaft



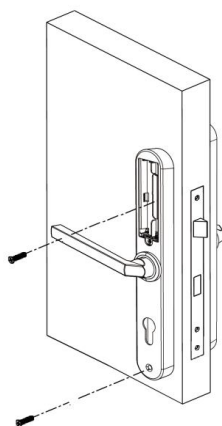
Step 3 Install Sliding Screw Casing



Step 4 Connect Front and Back Panels Wires



Step 5 Install Back Panel



Step 6 Install the lock cylinder and Battery

